



Service Instructions

Doc. No. Y157643 (EN - Rev. 000)
May 2014

Disassembly and Assembly Instructions for the “EAC2.1 Air Dryer Unit” and the “EAC2.1 Multi Circuit Protection Valve”.

This service instruction was created to support the safe disassembly and assembly of the EAC2.1 Air Dryer Unit and EAC2.1 Multi Circuit Protection Valve.

The procedure should be performed only by well-trained persons in a clean workshop.

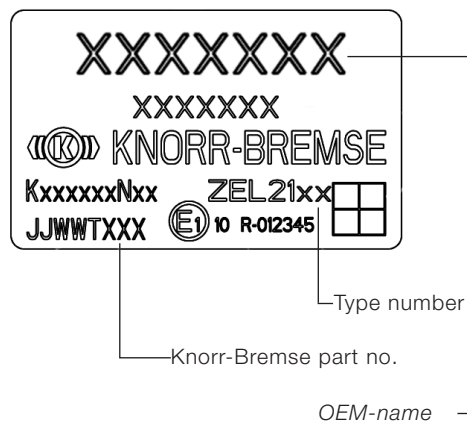
Use only original Knorr-Bremse parts.

Safety and Environmental instructions for service and repair work

- If the EAC2.1 has to be dismantled from the vehicle, deplete all pressure in the air system to 0 bar.
- Secure the vehicle so that it cannot move prior to beginning repair and service.
- Ensure the service brake is released and the parking brake is applied.
- Avoid touching the electrical connector pins of the EAC2.1.
- At the end of any service or repair work on the EAC2.1 a final audit must be carried out on a roller dynamometer including functional test.
- All items that are replaced should be disposed of according to local regulations. This is especially relevant for the EAC2.1 Air Dryer Unit, EAC2.1 Multi Circuit Protection Valve, Screws and Moulded seal.

For the full Knorr-Bremse Safety and Environmental Guidelines, please observe Knorr-Bremse document **Y075876** – see www.knorr-bremseCVS.com.

Product and Part Number Identification



- Identify Knorr-Bremse Part number from label
- Refer to website www.knorr-bremseCVS.com for aftermarket replacement

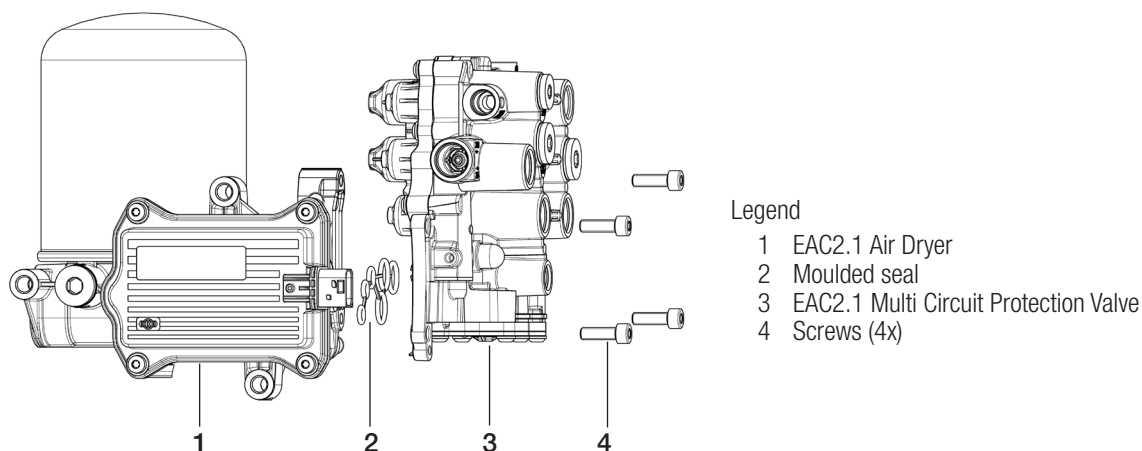
The information contained herein is subject to alteration without notice and therefore may not be the latest release. Please check our website www.knorr-bremseCVS.com for the latest update or contact your local Knorr-Bremse representative. The figurative mark “K” and the trademarks KNORR and KNORR-BREMSE are registered in the name of Knorr-Bremse AG. Additional terms and conditions apply; please refer to our website www.knorr-bremseCVS.com for full Disclaimer.

Note: If service work is carried out on a vehicle based on information provided herein, it is the responsibility of the workshop to ensure the vehicle is fully tested and in full functional order before the vehicle is returned into service. Knorr-Bremse accepts no liability for problems caused as a result of appropriate tests not being carried out.

Copyright © Knorr-Bremse AG - all rights reserved, including industrial property rights applications. Knorr-Bremse AG retains any power of disposal, such as for copying and transferring.

Knorr-Bremse Systeme für Nutzfahrzeuge GmbH . Georg-Knorr-Strasse 4 . 12681 Berlin . Germany . Tel: +49 1802 237 637 . Fax: +49 30 9392-3426 . www.Knorr-Bremse.com . www.Knorr-BremseCVS.com





General note

In the following the disassembly and the assembly of both moduls are discribed

Replacement of EAC2.1 Multi Circuit Protection Valve and the EAC2.1 Air Dryer Unit

Disassembly:

Please observe the safety instructions for repair and service work on page 1.

Clean the EAC2.1 and its working environment on the vehicle.

Disconnect electrical supply between vehicle and EAC2.1

Ensure the allocation of the air pressure pipe (to mark) to the respective fittings.

Disconnect pressure pipe.



Ensure the EAC2.1, can not drop during deinstallation.

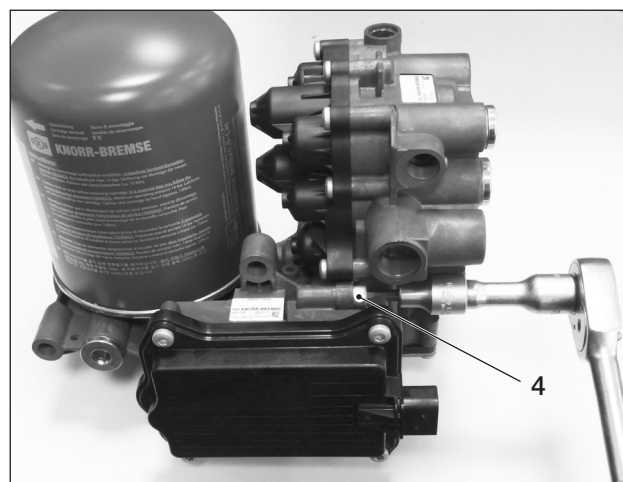
Disconnect EAC2.1 Airdryer Unit from chassis - refere to vehicle manufacturers instructions.

Take the EAC2.1 off from the chassis and put to a clean work bench.

Disconnect screws (4).



see page 1 for disposal.



The information contained herein is subject to alteration without notice and therefore may not be the latest release. Please check our website www.knorr-bremseCVS.com for the latest update or contact your local Knorr-Bremse representative. The figurative mark "K" and the trademarks KNORR and KNORR-BREMSE are registered in the name of Knorr-Bremse AG. Additional terms and conditions apply; please refer to our website www.knorr-bremseCVS.com for full Disclaimer.

Note: If service work is carried out on a vehicle based on information provided herein, it is the responsibility of the workshop to ensure the vehicle is fully tested and in full functional order before the vehicle is returned into service. Knorr-Bremse accepts no liability for problems caused as a result of appropriate tests not being carried out.

Copyright © Knorr-Bremse AG - all rights reserved, including industrial property rights applications. Knorr-Bremse AG retains any power of disposal, such as for copying and transferring.

Knorr-Bremse Systeme für Nutzfahrzeuge GmbH . Georg-Knorr-Strasse 4 . 12681 Berlin . Germany . Tel: +49 1802 237 637 . Fax: +49 30 9392-3426 . www.Knorr-Bremse.com . www.Knorr-BremseCVS.com

Service Instructions

Doc. No. Y157643 (EN - Rev. 000)
May 2014

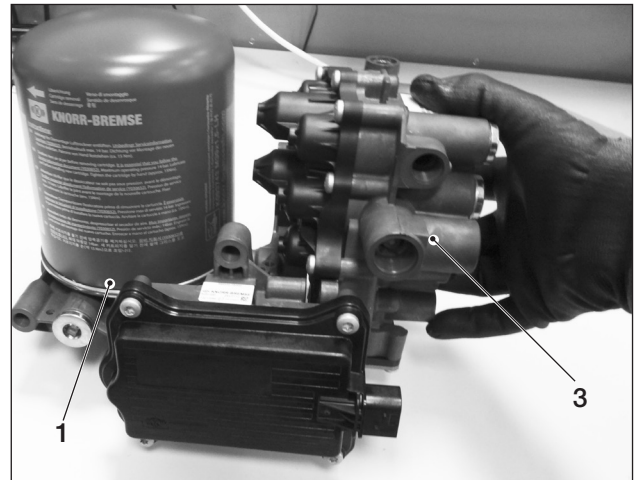
Disconnect the EAC2.1 Multi Circuit Protection Valve (3) from EAC2.1 Air Dryer Unit (1) and deposit the relevant modul.

 see page 1 for disposal.

Remove the Moulded seal (2) optionally may remain in the flange of EAC2.1 Air dryer unit (1) or EAC2.1 Multi Circuit Protection Valve (3).

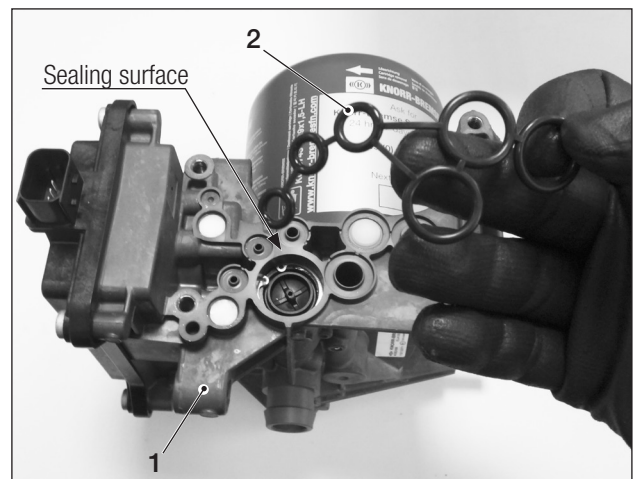
 Do not damage the sealing surface

 see page 1 for disposal.

**Assembly:**

Clean flange and sealing surface of the remaining unit.

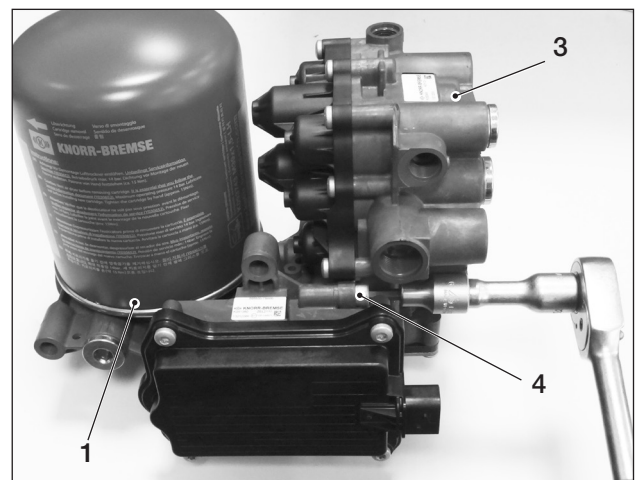
Place the Moulded seal (2) into sealing surface of the EAC2.1 Air Dryer Unit.



Position the EAC2.1 Multi protection Valve (3) to EAC2.1 Air Dryer Unit (1).

Tighten screws (4) by hand.

Tighten Screws (4) crosswise. Torque **25 +/- 2,5 Nm**.



The information contained herein is subject to alteration without notice and therefore may not be the latest release. Please check our website www.knorr-bremseCVS.com for the latest update or contact your local Knorr-Bremse representative. The figurative mark "K" and the trademarks KNORR and KNORR-BREMSE are registered in the name of Knorr-Bremse AG. Additional terms and conditions apply; please refer to our website knorr-bremseCVS.com for full Disclaimer.

Note: If service work is carried out on a vehicle based on information provided herein, it is the responsibility of the workshop to ensure the vehicle is fully tested and in full functional order before the vehicle is returned into service. Knorr-Bremse accepts no liability for problems caused as a result of appropriate tests not being carried out.

Copyright © Knorr-Bremse AG - all rights reserved, including industrial property rights applications. Knorr-Bremse AG retains any power of disposal, such as for copying and transferring.

Knorr-Bremse Systeme für Nutzfahrzeuge GmbH . Georg-Knorr-Strasse 4 . 12681 Berlin . Germany . Tel: +49 1802 237 637 . Fax: +49 30 9392-3426 . www.Knorr-Bremse.com . www.Knorr-BremseCVS.com

Service Instructions

Doc. No. Y157643 (EN - Rev. 000)
May 2014

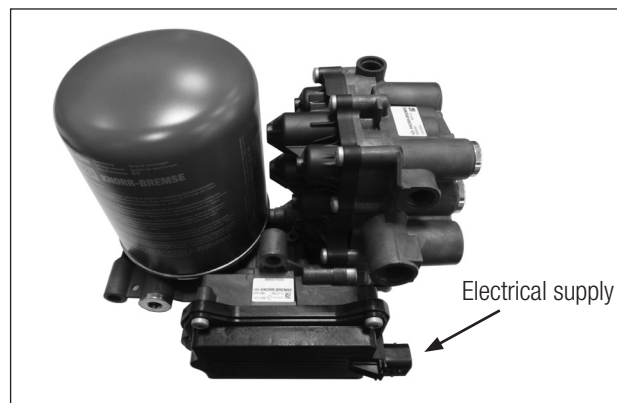
Reinstall the EAC2.1 Modul to the vehicle's chassis. Refere to the vehicles manufactures instructions.

Reconnect the priory marked presure pipes to the EAC2.1 Multe Circuit protection Valve.

Max. tightening torques for connection thread			
M7x1	M16x1.5	M18x1.5	M22x1.5
9 Nm	48 Nm	60 Nm	60 Nm

The EAC2.1 is delivered without the vehicle specific parameter data sets. To replace the product on the vehicle, either data mirroring or parameter set flashing must be performed. This can be performed using either the Knorr-Bremse NEO-System Diagnostics or the Original Equipment Manufacturer's workshop diagnostic tool.

Reconnect electrical supply



Disclaimer:

The information contained herein is intended for the exclusive use of trained persons within the commercial vehicle industry, and must not be passed on to any third party. All recommendations regarding products and their servicing or usage are with reference to Knorr-Bremse products and should not be considered applicable to products from other manufacturers. This information does not purport to be all-inclusive and no responsibility is assumed as a result of its use. We cannot accept any liability nor offer any guarantee regarding data accuracy, completeness or timeliness. The information does not represent any guarantee or ensured characteristics of the Products or Systems described. No liability can be accepted based on the information, its use, recommendations or advice provided. In no event may we be held liable for any damage or loss except in the case of wilful intent or gross negligence on our part, or if any mandatory legal provisions apply.

This disclaimer is an English translation of a German text, which should be referred to for all legal purposes. Any legal disputes arising from the use of this information shall be subject to German law.

The information contained herein is subject to alteration without notice and therefore may not be the latest release. Please check our website www.knorr-bremseCVS.com for the latest update or contact your local Knorr-Bremse representative. The figurative mark "K" and the trademarks KNORR and KNORR-BREMSE are registered in the name of Knorr-Bremse AG. Additional terms and conditions apply; please refer to our website www.knorr-bremseCVS.com for full Disclaimer.

Note: If service work is carried out on a vehicle based on information provided herein, it is the responsibility of the workshop to ensure the vehicle is fully tested and in full functional order before the vehicle is returned into service. Knorr-Bremse accepts no liability for problems caused as a result of appropriate tests not being carried out.

Copyright © Knorr-Bremse AG - all rights reserved, including industrial property rights applications. Knorr-Bremse AG retains any power of disposal, such as for copying and transferring. Knorr-Bremse Systeme für Nutzfahrzeuge GmbH . Georg-Knorr-Strasse 4 . 12681 Berlin . Germany . Tel: +49 1802 237 637 . Fax: +49 30 9392-3426 . www.Knorr-Bremse.com . www.Knorr-BremseCVS.com