

SPECIAL TOOLS & AUXILIARY TOOLS COMPREHENSIVE SOLUTIONS FROM KNORR-BREMSE

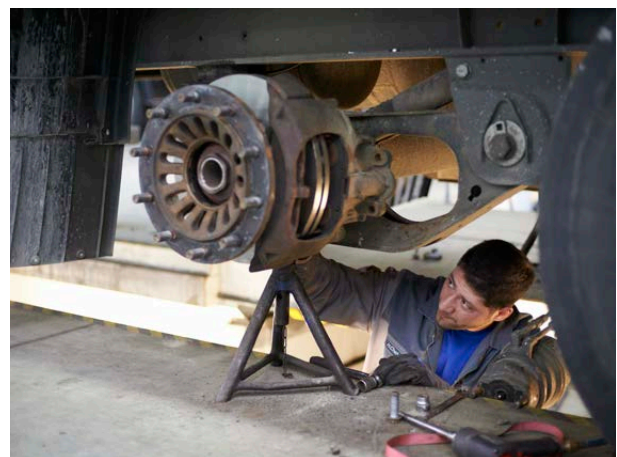
Knorr-Bremse TruckServices supplies vehicle owners, workshops and dealers with high-quality products and service solutions for commercial vehicles of all types and ages.

This ensures that every commercial vehicle is ready for use again as quickly and in as perfect condition as possible.

In order to make these repairs not only safer and faster, but also more cost-effective, Knorr-Bremse TruckServices is continuously extending its offer of special tools and auxiliary tools for maintenance.

At a glance

- › Workshop solutions inspired by market feedback
- › Developed in cooperation with leading companies producing special tools
- › Easier, safer, faster and more cost-effective maintenance
- › Continuous expansion of tool program



SPECIAL TOOLS & AUXILIARY TOOLS

CLUTCH COMPRESSOR TOOL CASE

Service Instruction: Y179440 / Y272764

Installation Instructions: Y059625

Suitable for Knorr-Bremse Clutch Compressors

- › Safe and optimal service of the Clutch
- › All essential tools combined in one Tool Case for fast and easy handling
- › Special tools, simplifying work steps
- › Maintenance of all Knorr-Bremse Clutch Compressor applications
- › Detailed repair instructions available online

The special tools from Knorr-Bremse support you in the following service actions:

- › Mounting and dismounting of the Clutch
- › Replacing the actuation piston
- › Mounting the output shaft

K052066K50

UP2DATE Y282362



TEBS TOOL CASE

Service Instruction: Y274021

Suitable for Knorr-Bremse Trailer EBS Modules

- › Fast releasing of all electronic connectors on Trailer EBS modules (power supply, additional functions, wheel speed sensors)
- › Tool for bayonet nut releasing comes with a square key, making it possible to use a standard ratchet
- › All other tools come with an ergonomically designed, two-component handle for a perfect fit in one's hand
- › Detailed repair instructions available online

The special tools from Knorr-Bremse support you in the following service actions:

- › Releasing the electrical connectors from the Trailer EBS Module
- › Releasing and tightening the power supply connector (bayonet nut)

Also available as single unit:

- › K141323N50 - TEBS extraction tool for 4/6 pole plug
- › K141324N50 - TEBS extraction tool for 12 pole plug
- › K141325N50 - TEBS extraction tool for 2 pole plug
- › K141326N50 - TEBS extraction tool for bayonet nut connector

K148897K50

UP2DATE Y286261



SPECIAL TOOLS & AUXILIARY TOOLS

AIR DISC BRAKE TOOL CASES

K158880K50 *

Service Instruction C16352, Y006471, Y081564, Y173241

Contains all the special tools required for professional repair of Knorr-Bremse Air Disc Brakes types SB6/SN6 & SB7/SN7/SK7/SM/SL7/ST7 *

- › Compact case to facilitate repair and maintenance
- › Robust design for every days workshop work
- › Perfectly organized & easy to transport
- › Detailed repair instructions available online

K039062K50

Suitable for Knorr-Bremse 19,5" & 22,5"

Contains all the special tools required for professional repair of Knorr-Bremse Air Disc Brakes types SN6, SN7, SK7, SM/SL7, ST7

K037001

Service Instruction: Y015044

Suitable for Knorr-Bremse 17,5" Air Disc Brakes

Contains all the special tools required for professional repair of Knorr-Bremse Air Disc Brakes type SN5

II37951004

Service Instruction: C16352

Suitable for Knorr-Bremse 17,5" Air Disc Brakes

Contains all the special tools required for professional repair of Knorr-Bremse Air Disc Brakes type SB5

K046291K50

Supplementary set (in addition to K015947)

Suitable for Knorr-Bremse 22,5"

Air Disc Brakes types SK7, SM/SL7, ST7

Supplementary Tool Kits for Air Disc Brakes

Knorr-Bremse TruckServices is going to add new supplementary Tool Kits including Service Tools dedicated to Air Disc Brakes outside of the Knorr-Bremse original equipment scope:

K172453K50 **

Suitable for WABCO Air Disc Brakes

K172454K50 **

Suitable for Haldex Air Disc Brakes



K158880K50



K037001



II37951004



* Will replacing tool case K039062K50

** In addition to K158880K50

SPECIAL TOOLS & AUXILIARY TOOLS

DIGITAL TESTING DEVICE FOR WEAR-POTENTIOMETERS

Operating Instruction: Y119119

Suitable for Knorr-Bremse Air Disc Brakes with continuous or black/white potentiometers

- › Testing of potentiometer functionality on Knorr-Bremse Air Disc Brakes
- › Checking the wear condition of the Brake Pads and Discs

K154433N50



SPECIAL TOOL BAYONET-RING

Disassembly and assembly Instruction: Y162789

Suitable for Knorr-Bremse Bayonet Cartridges

- › Easy and quick releasing and also tightening of the bayonet ring of Bayonet Cartridges
- › Intuitive handling
- › Simplification of everyday tasks in the workshops

K162153K50

UP2DATE Y314774



NEW

ACTUATOR MAINTENANCE GAUGE

Operating instructions: Y302415

Video: Y193970

Suitable for Knorr-Bremse Brake Actuators

- › Leads to quick service decisions
- › Reduction of downtime
- › Enables a quick and easy check of the height of the Actuator's seal and push rod
- › Ensures orientation of Actuator corresponds exactly with original installation

K108806K50

UP2DATE Y306344



NEW

BRAKE DISC MEASURING GAUGE

Operating instructions: Y302366

Video: Y257110

Suitable for Knorr-Bremse Brake Discs

- › Quick monitoring of the wear condition of all 17.5", 19.5" and 22.5" Brake Discs
- › Reduction of downtime
- › Supports quick identification of the current wear condition of a Brake Disc without removing the wheel

K146719K50

UP2DATE Y306333



NEW

SPECIAL TOOLS & AUXILIARY TOOLS

RELEASE TOOLS FOR RAUFOSS COUPLINGS/TUBE RELEASE

Release Tool Professional / Metal

Part Number	Tube	Thread
96606020	6x1.0	1/4"
96608020	8x1.0	
96610020	10x1.0; 10x1.25; 10x1.5	3/8"
96612020	12x1.5	1/2"
96615020	15x1.5	
96616020	16x2.0	5/8"

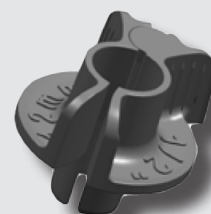
Release Tool Standard / Plastic

Part Number	Tube	Thread
96606010	6x1.0	1/4"
96608010	8x1.0	
96610010	10x1.0; 10x1.25; 10x1.5	3/8"
96612710	12x1.5	1/2"
96615010	15x1.5	
96616010	16x2.0	5/8"

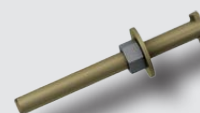
METAL



PLASTIC



K040394K50



RELEASE BOLT

Service Instruction: Y011369

Suitable for double-diaphragm Spring Brakes in Trailer application

- › Supports winding-off of the power spring in case of failure in the air system

EVERY VEHICLE TELLS ITS STORY.
KEEP IT RUNNING

Up-to-date information on our products can be
found on our website www.knorr-bremsecvs.com



Knorr-Bremse Group

Knorr-Bremse Systems for Commercial Vehicles

Moosacher Strasse 80 | 80809 Munich | Germany
Tél: +49 89 3547-0 | Fax: +49 89 3547-2767
WWW.KNORR-BREMSECVS.COM

Note

All information is subject to change. A printed version of this document may therefore not correspond to the latest revision. To obtain the latest version, please visit our website www.knorr-bremsecvs.com or contact a Knorr-Bremse representative in your area.

If service work is carried out on a vehicle based on information provided herein, it is the responsibility of the workshop to ensure the vehicle is fully tested and in full functional order before the vehicle is returned into service. Knorr-Bremse accepts no liability for problems caused as a result of appropriate tests not being carried out.

Copyright © Knorr-Bremse AG

All rights reserved, including industrial property rights applications. Knorr-Bremse AG retains any power of disposal, such as for copying and transferring.

Disclaimer

The information contained herein is intended for the exclusive use of trained persons within the commercial vehicle industry, and must not be passed on to any third party. All recommendations regarding products and their servicing or usage are with reference to Knorr-Bremse products and should not be considered applicable to products from other manufacturers. This information does not purport to be all-inclusive and no responsibility is assumed as a result of its use. We cannot accept any liability nor offer any guarantee regarding data accuracy, completeness or timeliness. The information does not represent any guarantee or ensured characteristics of the Products or Systems described. No liability can be accepted based on the information, its use, recommendations or advice provided. In no event may we be held liable for any damage or loss except in the case of wilful intent or gross negligence on our part, or if any mandatory legal provisions apply. This disclaimer is an English translation of a German text, which should be referred to for all legal purposes. Any legal disputes arising from the use of this information shall be subject to German law.