

# UP2DATE

## OPTIMAL TEAM PERFORMANCE KNORR-BREMSE TRUCKSERVICES BRAKE PADS & BRAKE DISCS PRODUCT RANGE

During the lifespan of a vehicle, brakes really do render the ultimate in performance on the road, handling stop-and-go traffic day in and day out, stopping safely in any weather and providing full-on emergency braking whenever it is necessary.

Stopping a vehicle as quickly as possible is just one of the many things Brake Discs and Brake Pads need to accomplish to perfection. Brake Discs, for example, also ensure that the heat generated in braking is effectively dissipated so as to avoid unnecessary stresses on the materials.

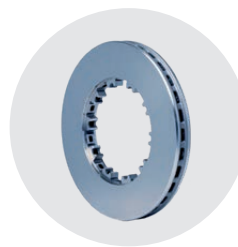
### At a glance

- › LOW LIFE-CYCLE COSTS  
thanks to optimized friction pairing and low wear
- › OUTSTANDING THERMAL RESISTANCE  
thanks to reduced transfer of heat from disc to wheel hub
- › ENHANCED AVAILABILITY  
thanks to perfectly matched products and comprehensive technical support



Brake Discs and Pads are especially critical to the performance of any Air Disc Brake. It is where the surfaces meet that shows how well the materials and technology really work. Friction pairings not only assure you of safe braking manoeuvres but also

optimizes wear on the Brake Discs and Pads, with the objective of timing service intervals to perfection and minimizing downtime.



Knorr-Bremse Brake Discs and Pads undergo continual development and optimization. They are the result of decades of research and development in all aspects of braking systems.

[Everything for economic maintenance and repair that keeps you running.](#)

Knorr-Bremse TruckServices is going to add new applications of Drum Brake Linings, Disc Brake Pads, as well as Brake Discs to complete the portfolio in these product families for commercial vehicles. This emphasizes our claim to offer our customers a comprehensive and complete range in well-known and very much appreciated Knorr-Bremse TruckServices quality.

On the following pages a complete overview for all Knorr-Bremse Brake Pads and Discs currently available for the Independent Aftermarket is provided.



## NO COMPROMISE OF SAFETY AND COST-SAVING KNORR-BREMSE BRAKE PAD PORTFOLIO

Vehicle Manufacturer	Vehicle Type	OE Part No.*	Brake Type	Knorr-Bremse Part Number	Comment	incl. ProtecS®	WVA Number	Brake Pad Type
Alexander Dennis	Enviro Line R200; R300; R345; R420; R500 4x2	K155988K50	SB / SN 6	K155988K50		X	29320 29361	Textar T7400
Assali Steffen		K147471K50	ST7	K147471K50	without pad-key	X	29393 29392	Jurid 539-39
BPW			SB / SN 7...	K046771K50	without pad-key	X	29252 29253	Jurid 539-39
		09.801.07.28.0 09.801.06.45.0	SN 7...	K011470K50	with pad key	-	29167	Jurid 539-39
		09.801.07.26.0 09.801.06.44.0	SK 7...	K011471K50	with pad key	-	29171	Jurid 539-39
		09.801.02.93.0	SB / SN 6...	K078206K50	without pad-key	X	29287	Jurid 539-39
		09.801.07.24.0 09.801.06.43.0	SB / SN 6...	K060273K50	with pad key	-	29165	Jurid 539-39
		09.801.07.07.0	SN 5...	K001537	without pad-key	-	29115	Ferodo 4550/X3
BOVA	FHD 10,12,13,14,15 / FLD 12,15	with ZF Axle	SB / SN 7...	K046771K50		X	29252 29253	Jurid 539-39
DAF	LF, CF, XF, Bus	1797053	SB / SN 7...	K107949K50		X	29253	Textar T7400
		1878030 1982826		K159176K50	incl. wear indicator	X	29253	Textar T7400
EVO Bus	City Bus 80km/h	A0084206020	SB / SN 7...	K094436K50		X	29278	Textar T7400
	Coach	A0064201020	SB / SN 7...	K046771K50		X	29252 29253	Jurid 539-39
GIGANT	DKH1 9010 4545 K		SB / SN 7...	K046772K50		X	29252 29253	Ferodo 4550/X3
	DKH1 9010 3745 K		SB / SN 6...	K056758K50		X	29287	Textar T3030
		K147471K50	ST7	K147471K50	without pad-key	X	29393 29392	Jurid 539-39
IVECO	Eurotech / Eurostar / Stralis	2996378 500054632 500086211	SB / SN 7...	K046772K50		X	29252 29253	Ferodo 4550/X3
	Eurocargo	2996468 500086004	SB / SN 6...	K056758K50		X	29287	Textar T3030
Jost Werke		1158683	SB / SN 7...	K046771K50		X	29252 29253	Jurid 539-39
		1157185	SK 7...	K066608K50		X	29257	Jurid 539-39
MAN	TGA, TGS, TGX	81.50820-6071	SB / SN 7...	K046771K50		X	29252 29253	Jurid 539-39
	City Bus 80km/h	81.50820-6070	SB / SN 7...	K059965K50		X	29253	Ferodo 4567
	TGM, Bus	81.50820-6060	SN 6...	K014597		-	29095	Jurid 239-20
	TGM AWD municipal vehicle	81.50820-6064	SN 6...	K016970	with green spring	-	29213	Jurid 539-20
	M 2000	81.50820-6058	SB / SN 6...	K056758K50		X	29287	Textar T3030
	TGL	81.50820-6054	SN 5...	K001537		-	29115	Ferodo 4550/X3



## NO COMPROMISE OF SAFETY AND COST-SAVING KNORR-BREMSE BRAKE PAD PORTFOLIO

Vehicle Manufacturer	Vehicle Type	OE Part No.*	Brake Type	Knorr-Bremse Part Number	Comment	incl. ProtecS®	WVA Number	Brake Pad Type
MERCEDES- BENZ	Actros MP III SOP > ca. Oct.10, Actros MP IV > ca. Oct.11	A0064201420	SM 7...;VA	K035471K50		X	29246	MB7111-0
		A0064201520	SL 7...;HA	K035472K50		X	29244	MB7211-0
	Actros MP III SOP > ca. Oct.10, Actros MP IV > ca. Oct.11	A0064205220	SM 7...;VA	K046773K50		X	29246	MB7121-0
		A0064205320	SL 7...;HA	K046774K50		X	29244	MB7221-0
	Actros, MP II, MP III up to ca. Oct.10, Axor, Travego	A0044206020 A0064201020	SB / SN 7...	K046771K50		X	29252 29253	Jurid 539-39
		A0044202220 A0064201120 A0084205620	SB / SN 7...	K046772K50		X	29252 29253	Ferodo 4550/X3
		A0004214310 A0034203520 A0084206020	SB / SN 7...	K094436K50		X	29278	Textar T7400
	Atego	A0024207820 A0084205820	SB / SN 6...	K115441K50		X	29341 29287 29320 29361	MB6122-0
		A0084206620	SB / SN 5...	K120338K50		-	29183	Textar T3016
	Trailer Axle Systems (TAS)	A0064201020	SB / SN 7...	K046771K50		X	29252 29253	Jurid 539-39
		A0044207020	SK 7...	K066608K50		X	29257	Jurid 539-39
		A0024207820 A0084205820	SB / SN 6...	K115441K50		X	29341 29287 29320 29361	MB6122-0
Neoplan	Auwärter-Neoplan Coach	with ZF Axle	SB / SN 7...	K046771K50		X	29252 29253	Jurid 539-39
	Auwärter-Neoplan City Bus	with ZF Axle	SB / SN 7...	K094436K50		X	29278	Textar T7400
SAE		K147471K50	ST7	K147471K50	without pad-key	X	29393 29392	Jurid 539-39
SAF		3.057.0006.00	ST 7...	K108020K50		X	29318 29319	Jurid 539-39
	SK RB 9022 K, SK RS 9022 K	3.057.0077.00	SB / SN 7...	K046771K50		X	29252 29253	Jurid 539-39
	SK RB 9022 KI 01	3.057.0085.00 3.057.0085.02	SK 7...	K066608K50		X	29257	Jurid 539-39
	SK RB 9019 K, SK RS 9019 K	3.057.0078.00 3.057.0078.02	SB / SN 6...	K078206K50		X	29287	Jurid 539-39
SCANIA	Scania PSV (includes IRIZAR)	2325213	SN 7 / SN 7-HP	K108461K50	New	X	29330 29331	Knorr-Bremse VV
	Series: 4, G, P, R, T	2325212	SN 7 / SN 7-HP	K071018K50		X	29330 29331	Knorr-Bremse YY

NEW



## NO COMPROMISE OF SAFETY AND COST-SAVING KNORR-BREMSE BRAKE PAD PORTFOLIO

Vehicle Manufacturer	Vehicle Type	OE Part No.*	Brake Type	Knorr-Bremse Part Number	Comment	incl. ProtecS®	WVA Number	Brake Pad Type
SCHMITZ		1178243	ST 7 ...	K097533K50		X	29328 29329	Jurid 539-39
	SK RB 9022 K	1182957	SB / SN 7 ...	K046771K50		X	29252 29253	Jurid 539-39
	SK RB 9022 K 01	1161563	SK 7 ...	K066608K50		X	29257	Jurid 539-39
	SK RB 9019 K	1182958	SB / SN 6 ...	K078206K50		X	29287	Jurid 539-39
SMB	K1-09, K1-10	M910045-02	SB / SN 7 ...	K046772K50		X	29252 29253	Ferodo 4550/X3
	K5		SB / SN 6 ...	K056758K50		X	29287	Textar T3030
Solaris	Urbino with ZF Axle	870215084	SB / SN 7...	K094436K50		X	29278	Textar T7400
ZF	Bova, Neoplan, Mercedes-Benz, EVO Bus, Solaris	0501221397	SB / SN 7...	K094436K50		X	29278	Textar T7400

Note: The "OE Part no." above should only be used as a reference for the identification of the relevant IAM part numbers. The information is supplied without liability.

The perfect way to find your Knorr-Bremse brake pad:  
[www.knorr-bremseCVS.com](http://www.knorr-bremseCVS.com)



## THE PERFECT MATCH: KNORR-BREMSE BRAKE PADS AND DISCS KNORR-BREMSE BRAKE DISC PORTFOLIO

OEM	Vehicle Type	Year of Manufacture	OE Part No.*	Knorr-Bremse Part Number	Brake Type	Axle		Outer Ø	Brake Disc Type
						Front	Rear		
BOVA	FHD10,12,13,14,15, FLD12,15 - ZF-Axle	1992 ->	234110	II371910061	SB 7	X	X	430	Flange
	FHD10,12,13,14,15, FLD12,15 - 20 hole	1997 ->	204556	K039422	SB / SN 6...	X	X	377	Top Hat
BPW	SB4345 without Pole Wheel	1997 ->	03.088.35.05.x	K050085	SB / SN 7...	X	X	430	Flange
	SB4309 without Pole Wheel	2003 ->	03.088.35.05.x	K050085	SK 7	X	X	430	Flange
	SB3745	1998 ->	03.088.34.02.x 03.088.34.04.x 03.088.34.06.x	K050086	SB / SN 6...	X	X	377	Flange
		1998 ->	03.088.34.08.x	K072616	SB / SN 6...	X	X	377	Flange
DAF <b>Relaunch</b>	CF, LF, XF	2001->	1812582	K034248K50	SB / SN 7...		X	432	Splined Disc
	CF, LF, XF	2001->	1812563	K034249K50	SB / SN 7...	X	-	432	Splined Disc
EvoBus	S316 HDS, S328 DT	1994->	A0004200172	II37415	SB / SN 7	X	-	430	Flange
GIGANT	DKH1 9010 4345 K without Pole Wheel	1999 ->	9267035	K050085	SB / SN 7...	X	X	430	Flange
	DKH1 9010 3745 K	1999 ->	9267063	K050086	SB / SN 6...	X	X	377	Flange
IVECO	Stralis	2002-2005	7189475	K050091	SB / SN 7...	X	-	432	Flange
		2005- May 2007	7189476	K069793	SB / SN 7...	-	X	432	Flange
		June 2007 ->	7189475	K050091	SB / SN 7...	X	-	432	Flange
	Eurocargo 150	2001 - 2004	2996707	K069795	SB / SN 6...	X	-	377	Flange
	Eurocargo 150	2001 ->	2996710	K069797	SB / SN 6...	-	X	377	Flange
	Eurocargo 150, 130, 120 Tector	2005 ->	2996708	K069794	SB / SN 6...	X	-	377	Top Hat
	Eurocargo 130	2001 - 2004	2996706	K069796	SB / SN 6...	X	-	377	Flange
	Eurocargo 130	2001 ->	2996709	K069798	SB / SN 6...		X	377	Flange
MAN	TGA, TGS, TGX	2000 ->	81.50803-0023 81.50803-0040	K069799	SB / SN 7...	X	-	432	Top Hat
			81.50803-0021 81.50803-0041	K069333		-	X	432	Flange
	M2000	1996 ->	81.50803-0027	II39290F	SB / SN 6...	X	-	377	Flange
	Bus with ZF-axle	2005 ->	36.50803-0000	II371910061	SB 7	X	X	430	Flange



## THE PERFECT MATCH: KNORR-BREMSE BRAKE PADS AND DISCS KNORR-BREMSE BRAKE DISC PORTFOLIO

OEM	Vehicle Type	Year of Manufacture	OE Part No.*	Knorr-Bremse Part Number	Brake Type	Axle		Outer Ø	Brake Disc Type
						Front	Rear		
MERCEDES-BENZ	Actros, Axor (MPI, MPII)	1996 - 2002	A9424211212 A9424212112 A9424212612	K119735	SB / SN 7...	X	X	430	Flange
	Actros, Axor (MPIII)	2002 - 2010	A9434210312 A9434210412 A9434210512	K119841	SB / SN 7...	X	-	430	Top Hat
	Actros, Axor (MPIII/MPIV)	MPIII 2010-> MPIV 2011->	A9604210312 A9604210412	K119842	SM 7	X	-	430	Top Hat
	Actros, Axor (MPIII/MPIV)	2002->	A9424230012 A9424230112	K119735	SL 7	-	X	430	Flange
	Atego 22,5"	1996 - 2002	A9424211212 A9424212112 A9424212612	K119735	SB / SN 7...	X	X	430	Flange
	Atego 19,5"	1998-> 10/2004	A9754230312 A9754230612 A9754230712	K050088	SB / SN 6...	-	X	377	Flange
			A9754210112 A9754210212 A9754210512	Z002016	SB / SN 6...	X	-	377	Top Hat
	Atego 17.5"	1998->	A9704210112 A9704210612	K005594	SB 5 / SN 5	X	-	335	Top Hat
			A9704230412 A9704230612	K069801	SB 5 / SN 5	-	X	335	Flange
			A9704230512 A9704230712	II304190061	SB 5 / SN 5	-	X	335	Flange
	Travego, Citaro, G/N/NG	1998 - 2011	A9424211212 A9424212112 A9424212612	K119735	SB / SN 7...	X	X	430	Flange
		2011->	A9434210312 A9434210412 A9434210512	K119841	SB / SN 7...	X	-	430	Top Hat
Travego, Citaro, G/N/NG with ZF- axle	1998 ->	A0004200272	II371910061	SB 7	X	X	430	Flange	
Trailer Axle NR5, TE5, TZ5	1997 ->	A9424212612	K119735	SB / SN 7... SK 7	X	X	430	Flange	
Trailer Axle TZ3 - 8 Hole	1998 ->	A9754230612	K050088	SB / SN 6...	-	X	377	Flange	
Neoplan	Bus with ZF-axle	1992->	1101-5508 0821.358.30 0804.550.10	II371910061	SB 7	X	X	430	Flange
SAF	SK RS 9022 K	1997->	4.079.0003.x	K069805	SK 7	X	X	430	Flange
	SK RS 9022 K	1997->	4.079.0005.x	K005938	SB / SN 7...	X	X	430	Top Hat
	SK RS 9019 K	1997->	4.079.0004.x	K069804	SB / SN 6...	X	X	377	Flange
	SK RZ 9019 K	1997->	4.079.0004.x	K069804	SB / SN 6...	X	X	377	Flange
	SK RB 9019 K	1997->	4.079.0007.x	K050090	SB / SN 6...	X	X	377	Top Hat



## THE PERFECT MATCH: KNORR-BREMSE BRAKE PADS AND DISCS KNORR-BREMSE BRAKE DISC PORTFOLIO

OEM	Vehicle Type	Year of Manufacture	OE Part No.*	Knorr-Bremse Part Number	Brake Type	Axle		Outer Ø	Brake Disc Type
						Front	Rear		
SCANIA	4er Series, P/R/T	1996->	1402272 1852817	K000810	SB / SN 7...	X	X	430	Flange
	CN94, Omnicity, Omnilink	2001->	1402272 1852817	K000810	SB / SN 7...	X	X	430	Flange
	CN94, Omnicity, Omnilink with ZF- axle	2001->	1415147	11371910061	SB 7	X	X	430	Flange
SCHMITZ	SK RB 9022 K - 10 hole	1997->	1009863 4.079.0006.x	K069805	SK 7...	X	X	430	Flange
	SK RB 9022 K - 12 hole	1997->	1004657 4.079.0005.x	K005938	SB / SN 7...	X	X	430	Top Hat
	SK RB 9019 K	1997->	1091853 4.079.0007.x	K050090	SB / SN 6...	X	X	377	Top Hat
SMB	KA 05 - 8 hole	-	M078157	K069806	SB / SN 6...	X	X	377	Flange
Solaris	Urbino	2000->	829707	1139278F	SB 7	X	-	430	Flange
	Urbino with ZF- axle		821358300	11371910061	SB 7	X	X	430	Flange
VDL	SB 120 19,5"	2001->	1142086 30094432	K039422	SB / SN 6...	X	X	377	Top Hat
	SB 120 19,5"	2001->	1142132 41152275	1138628F	SB / SN 6...	-	X	377	Flange
ZF	Portal axle	-	0501316953	11371910061	SB / SN 7...	X	X	430	Flange

\* The "OE Part no." above should only be used as a reference for the identification of the relevant IAM part numbers. The information is supplied without liability.

EVERY VEHICLE TELLS ITS STORY.  
**KEEP IT RUNNING**

Up-to-date information on our products can be  
found on our website [www.knorr-bremsecvs.com](http://www.knorr-bremsecvs.com)



Knorr-Bremse Group

### Knorr-Bremse Systems for Commercial Vehicles

Moosacher Strasse 80 | 80809 Munich | Germany  
Tél: +49 89 3547-0 | Fax: +49 89 3547-2767  
[WWW.KNORR-BREMSECVS.COM](http://WWW.KNORR-BREMSECVS.COM)

#### Note

All information is subject to change. A printed version of this document may therefore not correspond to the latest revision. To obtain the latest version, please visit our website [www.knorr-bremsecvs.com](http://www.knorr-bremsecvs.com) or contact a Knorr-Bremse representative in your area.

If service work is carried out on a vehicle based on information provided herein, it is the responsibility of the workshop to ensure the vehicle is fully tested and in full functional order before the vehicle is returned into service. Knorr-Bremse accepts no liability for problems caused as a result of appropriate tests not being carried out.

#### Copyright © Knorr-Bremse AG

All rights reserved, including industrial property rights applications. Knorr-Bremse AG retains any power of disposal, such as for copying and transferring.

#### Disclaimer

The information contained herein is intended for the exclusive use of trained persons within the commercial vehicle industry, and must not be passed on to any third party. All recommendations regarding products and their servicing or usage are with reference to Knorr-Bremse products and should not be considered applicable to products from other manufacturers. This information does not purport to be all-inclusive and no responsibility is assumed as a result of its use. We cannot accept any liability nor offer any guarantee regarding data accuracy, completeness or timeliness. The information does not represent any guarantee or ensured characteristics of the Products or Systems described. No liability can be accepted based on the information, its use, recommendations or advice provided. In no event may we be held liable for any damage or loss except in the case of wilful intent or gross negligence on our part, or if any mandatory legal provisions apply. This disclaimer is an English translation of a German text, which should be referred to for all legal purposes. Any legal disputes arising from the use of this information shall be subject to German law.